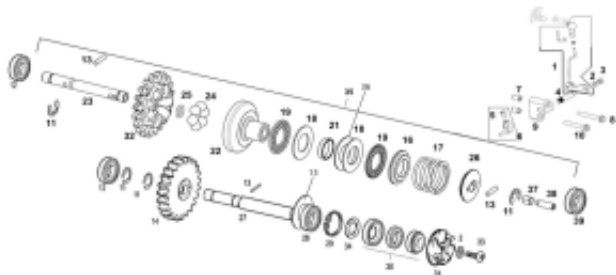


Link do produktu: <https://www.sklep.ms-mot.pl/zabezpieczenie-pompy-wody-rieju-mr-gasgas-ec-00003009103-p-864.html>

## Zabezpieczenie pompy wody Rieju MR, Gasgas EC 0/000.300.9103



Cena	<b>1 zł</b>
Dostępność	<b>Na zamówienie</b>
Numer katalogowy	<b>0/000.300.9103</b>
Kod producenta	<b>0/000.300.9103</b>
Producent	<b>Rieju</b>

### Opis produktu

Uszczelniacze pompy wody nr 11 na rys.

**WATERPUMP SEEGERRING DIN 6799 E7**

Rieju MR 200 - 300  
Gas Gas EC 125-200-250-300  
NR OEM 0/000.300.9103

[EC 2T 2018 - Engine EC REPLICAFACTORY 2014- Engine ECRANGER 2019 - Engine EC REPLICAGIULLAUME 250-300 2012- Engine MR 2022 80 ANIV 9106.9108.9113 XC 2T 2018 - Engine EC - MX - SM 2T 125-200-250-300 2005- Engine EC - MX - SM 2T 125-200-250-300 2005- Engine EC RACING 125-250-300 2011- Engine EC RACING 125-250-300 2011- Engine EC - MC 2T 125-200-250-300 2009- Engine EC - MC 2T 125-200-250-300 2009- Engine ENDURO RACING 125-250-300 2010- Engine ENDURO RACING 125-250-300 2010- Engine EC - MC 2T 125-200-250-300 2002- Engine EC - MC 2T 125-200-250-300 2002- Engine EC 2T 250-300 2013- Engine ENDURO NAMBOTIN REPLICAFACTORY 250-300 2010- Engine EC 2T 200-250-300 2014- Engine EC - MX - SM 2T 125-200-250-300 2003- Engine EC - MX - SM 2T 125-200-250-300 2003- Engine EC RACING 2014- Engine EC 250-300 2012- Engine EC - MX - SM 2T 125-200-250-300 2004- Engine EC - MX - SM 2T 125-200-250-300 2004- Engine ENDURO GP 2T 2018 - Engine EC RACING 125 2013- Engine EC 250-300 RACING 2012- Engine EC - MC 125-200-250-300 2010- Engine EC - MC 125-200-250-300 2010- Engine EC - MX - SM 2T 125-200-250-300 2007- Engine EC - MX - SM 2T 125-200-250-300 2007- Engine EC - MX - SM 2T 125-200-250-300 2006- Engine EC - MX - SM 2T 125-200-250-300 2006- Engine EC 2T USA 250-300 2013- Engine EC 2T 200-250-300 2001- Engine EC 2T RACING 250-300 2013- Engine HALLEY 2T EH - SM 2009- Engine EC 2T 2019 - Engine EC RACING 2015- Engine EC 125-200-250-300, 250/300E, SIXDAYS 2011- Engine EC 125-200-250-300, 250/300E, SIXDAYS 2011- Engine ENDURO 125-200-250-300 SIXDAYS 2010- Engine ENDURO 125-200-250-300 SIXDAYS 2010- Engine MR 2022 V1 9106.9108.9109 EC REPLICAFACTORY 250-300 2013- Engine REPLICAFACTORY CERVANTES NAMBOTIN 250-300 2T 2011- Engine MR RANGER 2020 0829102 EC 2T 2015 - Engine EC - MC 125-200-250-300 2008- Engine EC - MC 125-200-250-300 2008- Engine EC E 2T USA 250-300 2013- Engine SIX DAYS CHILE 2019 - Engine MR 2022 V2 9105.9111.9110 0829100 EC E 2T 250-300 2012- Engine EC 2T 2017 - Engine MR 2024 300 9115 EC - SM 4T 450-515 2009- Engine FSE 400-450 2007- Engine FSR EC/SM 2008- Engine FSE 400-450 2006- Engine PAMPERA 2007- Engine FSE 400-450 2005- Engine FSE 400-450 2004- Engine FSE 400-450 2003- Engine](#)

### GPRS Dystrybutor

GPRS Dystrybutor

**MS-MOT Sp. z o.o.**  
ul. Kanałowa 1  
82-100 Nowy Dwór Gdański  
NIP: 579-227-83-62

---

V CRUISER SPÓŁKA Z OGRANICZONĄ ODPOWIEDZIALNOŚCIĄ  
ul. Bułgarska 65A Poznań 60-320