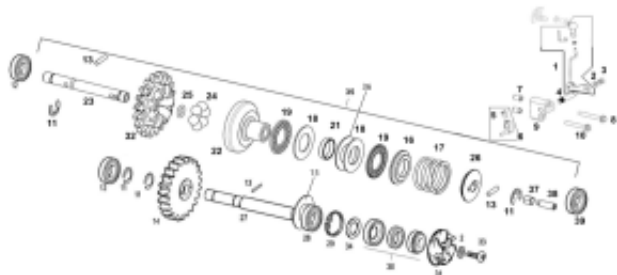


Link do produktu: <https://www.sklep.ms-mot.pl/lozysko-walka-pompy-rieju-mr-gasgas-ec-00009609108-p-721.html>

Łożysko wałka pompy Rieju MR, GasGas EC, 0/000.960.9108



| | |
|------------------|-----------------------|
| Cena | 20 zł |
| Dostępność | Na zamówienie |
| Numer katalogowy | 0/000.960.9108 |
| Kod producenta | 0/000.960.9108 |
| Producent | Rieju |

Opis produktu

Łożysko wałka pompy Rieju MR, GasGas EC, nr 12 rys.

Gas Gas EC 125-200-250-300
NR OEM **0/000.960.9108**

[EC 2T 2018 - Engine EC 2T 2018 - Engine EC REPLICA FACTORY 2014- Engine EC REPLICA FACTORY 2014- Engine ECRANGER 2019 - Engine ECRANGER 2019 - Engine ECRANGER 2019 - Engine EC REPLICA GIULLAUME 250-300 2012- Engine EC REPLICA GIULLAUME 250-300 2012- Engine EC REPLICA GIULLAUME 250-300 2012- Engine MR 2022 80 ANIV 9106.9108.9113 MR 2022 80 ANIV 9106.9108.9113 XC 2T 2018 - Engine XC 2T 2018 - Engine XC 2T 2018 - Engine EC - MX - SM 2T 125-200-250-300 2005- Engine EC - MX - SM 2T 125-200-250-300 2005- Engine EC - MX - SM 2T 125-200-250-300 2005- Engine EC - MX - SM 2T 125-200-250-300 2005- Engine EC - MX - SM 2T 125-200-250-300 2005- Engine EC RACING 125-250-300 2011- Engine EC RACING 125-250-300 2011- Engine EC RACING 125-250-300 2011- Engine EC RACING 125-250-300 2011- Engine EC RACING 125-250-300 2009- Engine EC - MC 2T 125-200-250-300 2009- Engine EC - MC 2T 125-200-250-300 2009- Engine EC - MC 2T 125-200-250-300 2009- Engine EC - MC 2T 125-200-250-300 2009- Engine EC - MC 2T 125-200-250-300 2009- Engine ENDURO RACING 125-250-300 2010- Engine ENDURO RACING 125-250-300 2010- Engine ENDURO RACING 125-250-300 2010- Engine ENDURO RACING 125-250-300 2010- Engine ENDURO RACING 125-250-300 2010- Engine EC - MC 2T 125-200-250-300 2002- Engine EC - MC 2T 125-200-250-300 2002- Engine EC - MC 2T 125-200-250-300 2002- Engine EC - MC 2T 125-200-250-300 2002- Engine EC 2T 250-300 2013- Engine EC 2T 250-300 2013- Engine EC 2T 250-300 2013- Engine ENDURO NAMBOTIN REPLICA 250-300 2010- Engine ENDURO NAMBOTIN REPLICA 250-300 2010- Engine EC 2T 200-250-300 2014- Engine EC 2T 200-250-300 2014- Engine EC - MX - SM 2T 125-200-250-300 2003- Engine EC - MX - SM 2T 125-200-250-300 2003- Engine EC - MX - SM 2T 125-200-250-300 2003- Engine EC - MX - SM 2T 125-200-250-300 2003- Engine EC RACING 2014- Engine EC 250-300 2012- Engine EC 250-300 2012- Engine EC 250-300 2012- Engine EC - MX - SM 2T 125-200-250-300 2004- Engine EC - MX - SM 2T 125-200-250-300 2004- Engine EC - MX - SM 2T 125-200-250-300 2004- Engine EC - MX - SM 2T 125-200-250-300 2004- Engine ENDURO GP 2T 2018 - Engine ENDURO GP 2T 2018 - Engine EC RACING 125 2013- Engine EC 250-300 RACING 2012- Engine EC 250-300 RACING 2012- Engine EC - MC 125-200-250-300 2010- Engine EC - MC 125-200-250-300 2010- Engine EC - MC 125-200-250-300 2010- Engine EC - MC 125-200-250-300 2010- Engine EC - MX - SM 2T 125-200-250-300 2007- Engine EC - MX - SM 2T 125-200-250-300 2007- Engine EC - MX - SM 2T 125-200-250-300 2007- Engine EC - MX - SM 2T 125-200-250-300 2007- Engine EC RACING COUNTRY USA 250-300 2012- Engine EC RACING COUNTRY USA 250-300 2012- Engine EC RACING COUNTRY USA 250-300 2012- Engine EC - MX - SM 2T 125-200-250-300 2006- Engine EC - MX - SM 2T 125-200-250-300 2006- Engine EC - MX - SM 2T 125-200-250-300 2006- Engine EC 2T USA 250-300 2013- Engine EC 2T USA 250-300 2013- Engine EC 2T USA 250-300 2013- Engine EC 2T 200-250-300 2001- Engine EC 2T 200-250-300 2001- Engine EC 2T 200-250-300 2001- Engine EC 2T RACING 250-300 2013- Engine EC 2T RACING 250-300 2013- Engine EC 2T RACING 250-300 2013- Engine EC 2T 2019 - Engine EC 2T 2019 - Engine EC 2T 2019 - Engine EC RACING 2015- Engine EC 125-200-250-300, 250/300E, SIXDAYS 2011- Engine EC 125-200-250-300, 250/300E, SIXDAYS 2011- Engine EC 125-200-250-300, 250/300E, SIXDAYS 2011- Engine EC 125-200-250-300, 250/300E, SIXDAYS 2011- Engine ENDURO 125-200-250-300 SIXDAYS 2010- Engine ENDURO 125-200-250-300 SIXDAYS 2010- Engine ENDURO 125-200-250-300 SIXDAYS 2010- Engine ENDURO 125-200-250-300 SIXDAYS 2010- Engine MR 2022 V1 9106.9108.9109 MR 2022 V1](#)

MS-MOT Sp. z o.o.

ul. Kanałowa 1
82-100 Nowy Dwór Gdański
NIP: 579-227-83-62

[9106.9108.9109 EC REPLICA FACTORY 250-300 2013- Engine EC REPLICA FACTORY 250-300 2013- Engine EC REPLICA FACTORY 250-300 2013- Engine REPLICA CERVANTES NAMBOTIN 250-300 2T 2011- Engine REPLICA CERVANTES NAMBOTIN 250-300 2T 2011- Engine REPLICA CERVANTES NAMBOTIN 250-300 2T 2011- Engine MR RANGER 2020 0829102 MR RANGER 2020 0829102 EC 2T 2015 - Engine EC 2T 2015 - Engine EC - MC 125-200-250-300 2008- Engine EC - MC 125-200-250-300 2008- Engine EC - MC 125-200-250-300 2008- Engine EC - MC 125-200-250-300 2008- Engine EC E 2T USA 250-300 2013- Engine EC E 2T USA 250-300 2013- Engine EC E 2T USA 250-300 2013- Engine SIX DAYS CHILE 2019 - Engine SIX DAYS CHILE 2019 - Engine MR 2022 V2 9105.9111.9110 MR 2022 V2 9105.9111.9110 0829100 0829100 EC E 2T 250-300 2012- Engine EC E 2T 250-300 2012- Engine EC E 2T 250-300 2012- Engine EC 2T 2017 - Engine EC 2T 2017 - Engine EC 2T 2017 - Engine MR 2024 300 9115 MR 2024](#)

GPRS Dystrybutor

GPRS Dystrybutor
V CRUISER SPÓŁKA Z OGRANICZONĄ ODPOWIEDZIALNOŚCIĄ
ul. Bułgarska 65A Poznań 60-320